

Measure & Check Distances  
from Monument at 29th &  
Horriam to Street line in  
University Park add -

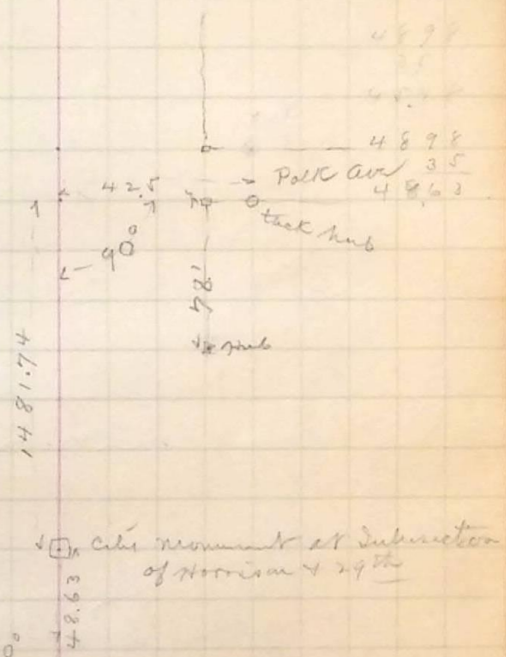
Dist	Slope	Comput.	Correction	Correction
200	-3° 19'	93°	100	-310
200	-5.32	99	-	-890
200	-5.12	84°	-	-801
200	-3.20	98	200	-368
200	-1.00	94°	-	+005
100	-00	94	-	+018
200	3.20	76	200	-372
160 <sup>80°</sup>	3.38	90	-	-343
1484.80				-3061

B42

Francis on point on center line of 29th approx  
Set point on E. line of Park Ave - established  
by measuring back 42.5 from road a  
42.5 foot line previously run and  
on said E. line of Park Ave - 3  
run that to City Monument on Horriam  
as shown above -

Also measure distance from City monument  
not above said center line as shown  
in sketch

199.690  
199.110  
199.199  
199.632  
200.005  
100.018  
199.628  
184.757  
1481.739



Monument at  
N. 14 cor. B see 34

B43